

WM Chaffee Landfill  
10860 Olean Road  
Chaffee, NY 14030

PRSR STD  
US POSTAGE  
PAID  
CHAFFEE NY  
PERMIT NO 1

# Waste Management News

For our neighbors in Sardinia

Volume 6, Number 3 December, 2009

## Don't forget the 3Rs this season!

The New York State Department of Environmental Conservation is offering helpful information on reducing, reusing and recycling this holiday season. Point your browser to [www.dec.ny.gov/chemical/8829.html](http://www.dec.ny.gov/chemical/8829.html) and learn how you can make it a greener holiday.

ECRWSS  
Postal Customer

## Open house

More than 1,000 neighbors and local residents attended Waste Management's Open House & Information Fair on July 31. This was one of the largest crowds ever to attend the annual event, which included food, entertainment, education and tours of the facility, with a number of local civic and environmental groups participating as well.



[www.wm.com](http://www.wm.com)

From everyday collection to environmental protection, Think Green. Think Waste Management.

## Manager's report



Tom Lewis,  
District Manager

If your year has been like ours, I'm sure you're looking forward to the holidays and looking back over what you've accomplished this year. So in that spirit I'd like to give you a brief year-end report. And it turns out that our major focuses and activities over the past year all begin with a C—construction, communication and community.

### Construction

We recently completed construction of our new landfill cell IV. This 10-acre cell includes the same design features and environmental protections as our other recent cells, and will begin seeing regular use early next year. Cell IV is located in the interior of our property, so you may not have noticed our liner construction unless you visited or attended our Open House & Information Fair in August, where we conducted tours of the work in progress.



Cell IV liner construction in progress earlier this year

Next year we'll begin placing a final cover system or cap on the old landfill section of our site. This 23-acre area has been in use since 1958, and has been one of the most visible sections of our property. Our cap is a multi-layer cover system that stabilizes the contours, provides drainage to prevent precipitation from entering the waste mass, enables long-term monitoring and makes a significant improvement in the area's appearance. You'll notice that this cap will use native grasses as its top layer; it will soon become grassland habitat for birds and other animals.

This year we also received approval from the New York State Department of Environmental Conservation and the Town of Sardinia for an on-site borrow area. A number of our operations here require the use of clays and soils—clays

to provide a stable, low-permeability base at the bottom of our liner system, and both clays and soils for capping and the daily cover we apply over each day's deposits. The more of our own resources we can use for these purposes, the less we need to transport in.

### Communication

We work hard to communicate effectively with our neighbors and the surrounding community, through our newsletter, our open-door policy, our annual open house, our presence at meetings and just by being out in the community. We also have a website, and we're in the process of redesigning it to provide additional information and to make it easier to find whatever you may be looking for. Stay tuned to [www.chaffeelandfill.com](http://www.chaffeelandfill.com); we're hoping to have the revised site up and running early next year.

### Community

For many years we have worked to be a valued partner with the local community, and last year was no different. In this issue of *Waste Management News* you can find brief recaps of our annual Open House & Information Fair and our annual Waste Management Girls' Basketball Tournament. You'll also find an article on our recent work in protecting wildlife habitat and expanding community understanding of its vital importance.



More than 100 local residents took advantage of the opportunity to dispose of household hazardous waste (HHW) properly at the Chaffee Landfill's most recent HHW collection at the facility in September. Tires, fluorescent lights, compressed gas canisters and other potentially hazardous materials were collected at the landfill and promptly shipped to a specialized facility for proper disposal.

In addition, we recently amended our Host Community Agreement in such a way as to create an Environmental

cont'd on pg. 3

WM Chaffee Landfill  
10860 Olean Road  
Chaffee, NY 14030

For information about our facility or to arrange a tour, call us at 716-496-5192, ext. 500.

Printed on recycled paper.

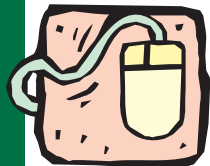


From everyday collection to environmental protection, Think Green. Think Waste Management.

## Upgrade in progress

The Chaffee Landfill has had a website for several years, enabling anyone to get online and learn about our site, environmental protections, the materials we accept, our permit status and a range of other information. The website was originally created to help us communicate more effectively, and based on inputs from local residents we're currently in the process of revising it to add more information and make the site easier to navigate.

The redesigned site will be up and running early in 2010, and we'll be eager to hear your feedback. The Contact Us link will still be there, so please let us know.



## Waste Management recognized for environmental contributions

The Chaffee Landfill was recognized at the Wildlife Habitat Council's 21st Annual Symposium in Baltimore recently, when the facility had its *Wildlife at Work* certification renewed and earned its first *Corporate Lands for Learning* certification.

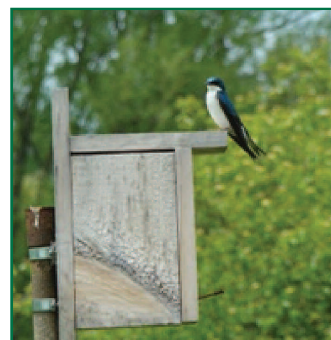
The Wildlife Habitat Council (WHC) recognizes commendable wildlife habitat management and environmental education programs at individual sites through the *Wildlife at Work* program. The facility earned its initial certification in 2007, and the recertification documents the continuation of the landfill's efforts to maintain high-quality habitat.

WHC recognizes community-oriented educational efforts through its *Corporate Lands for Learning (CLL)* program, which fosters a clear understanding of the interdependence of ecology, economics, social structures and political process.

CLL certification recognizes the facility's effort to involve the community and expand public awareness of vital environmental principles and relationships that help determine the health of ecosystems. The facility

### Did you know?

- Four threatened or endangered plants have been found on the landfill's property: Sartwell's sedge, Schweinitz's sedge, blunt spikerush and woodlands bluegrass.
- Of the 17 different ecological communities identified on-site, one—rich shrub fen—is considered especially vulnerable in New York.
- At least 57 species of birds, 13 species of animals, six species of butterflies and moths and 31 species of plants have been identified on-site as a result of the facility's ongoing species inventory.
- The Chaffee Landfill is one of only 14 WM locations across North America that has earned both *Wildlife at Work* and *Corporate Lands for Learning* certifications.



Another aspect that won't change on our new site is the links we provide to a number of other Waste Management websites. These include:

- [www.wm.com](http://www.wm.com) - this is our corporate website where you can learn about our company, which is North America's largest provider of waste and environmental services.
- [www.thinkgreen.com](http://www.thinkgreen.com) - this site focuses on how Waste Management is delivering on the promise of Think Green®, with case studies, classroom tools and other resources.
- [www.thinkgreenfromhome.com](http://www.thinkgreenfromhome.com) - this site supports home delivery of our unique recycling solutions for fluorescent lights, batteries, electronics and other materials.



The Wildlife Habitat Council's Scott Kilkenny (at left) presents its Wildlife at Work certification to the Chaffee Landfill, which was represented by Operations Specialist Tammy Souter and District Manager Tom Lewis at the organization's annual symposium in November.

has partnered with a number of local organizations in providing environmental education opportunities, including Earth Spirit, Boy Scouts, Girl Scouts, 4-H, a number of local schools, the University of Buffalo, Foxwood Wildlife Rehabilitation and Owl Facts. The facility also participates in a number of off-site activities, like Earth Spirit's Winter Maple Sugaring Program, which has hosted more than 20,000 attendees since it began in 2002.

### Join us!

Waste Management invites local residents to join in our volunteer efforts to protect and enhance local wildlife habitat. We're now organizing our plans and projects for 2010, so please call us at 716-496-5192, ext. 500 to learn how you can become involved. You can not only help to make this area a better home for native species, but learn important ecological and environmental principles as well.

## Recap: 19th Waste Management Girls' Basketball Tournament



Pioneer's varsity was this year's tournament champion, defeating St. Mary's of Lancaster in the opening round and Immaculata Academy in the championship game.



Mt. Mercy of Buffalo won the junior varsity championship at the annual tournament, held November 27 and 28 at Pioneer. Mt. Mercy defeated Immaculata Academy in the opener and St. Mary's of Lancaster in the final game.

Waste Management's Tammy Souter presents championship trophies to Pioneer's Ashling Flannery (left) and Jenna Crabb.

### Manager's report, cont'd from pg. 1

Fund that will be administered and disbursed by Town leaders. For the next ten years we'll be making an annual contribution of \$25,000 to this fund, and we eagerly anticipate the environmental projects and initiatives that will grow out of that funding.

I'm also very pleased to say that, as a result of the determined efforts of a number of community leaders, we've resolved several pending lawsuits in an amicable fashion. We recognize that Waste Management operates this facility with

the cooperation of the local community, and believe that the process of resolving these has reinforced the common ground we share: providing for basic community needs in a way that makes a significant contribution to the quality of life here.

We're looking forward to the new year, and we hope to hear from you. Whether it's for a site tour, to participate in one of our wildlife programs, or even if only to answer a question, please call us any time.